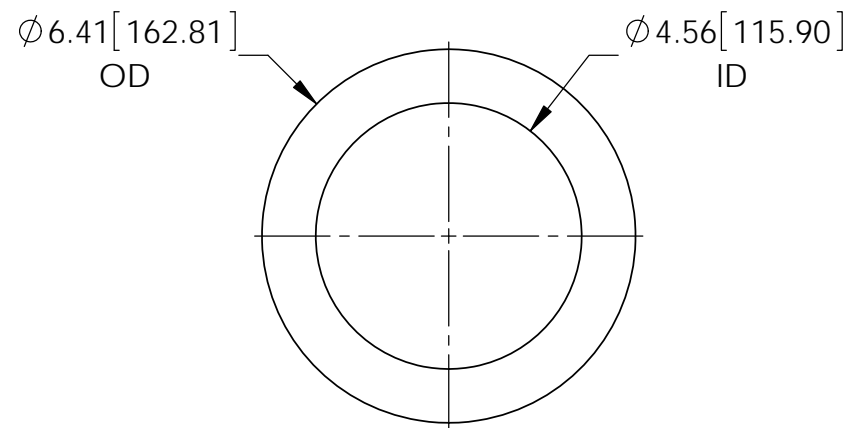


ROOF MOUNTING FLANGE

REQ'D: 2 PER ASSY
MAT'L: ALUMINUM $\triangle 1$



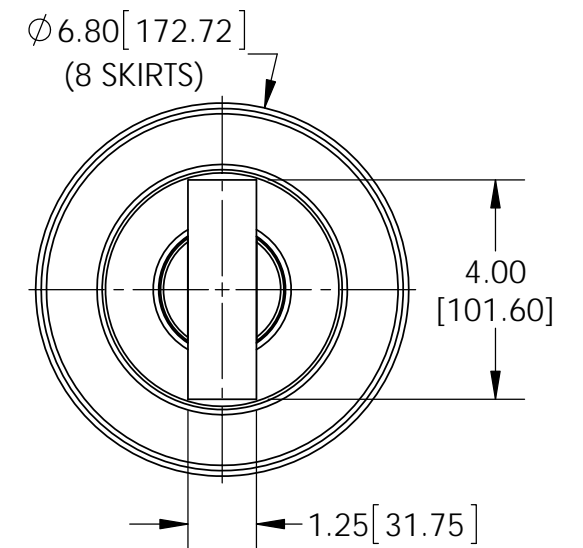
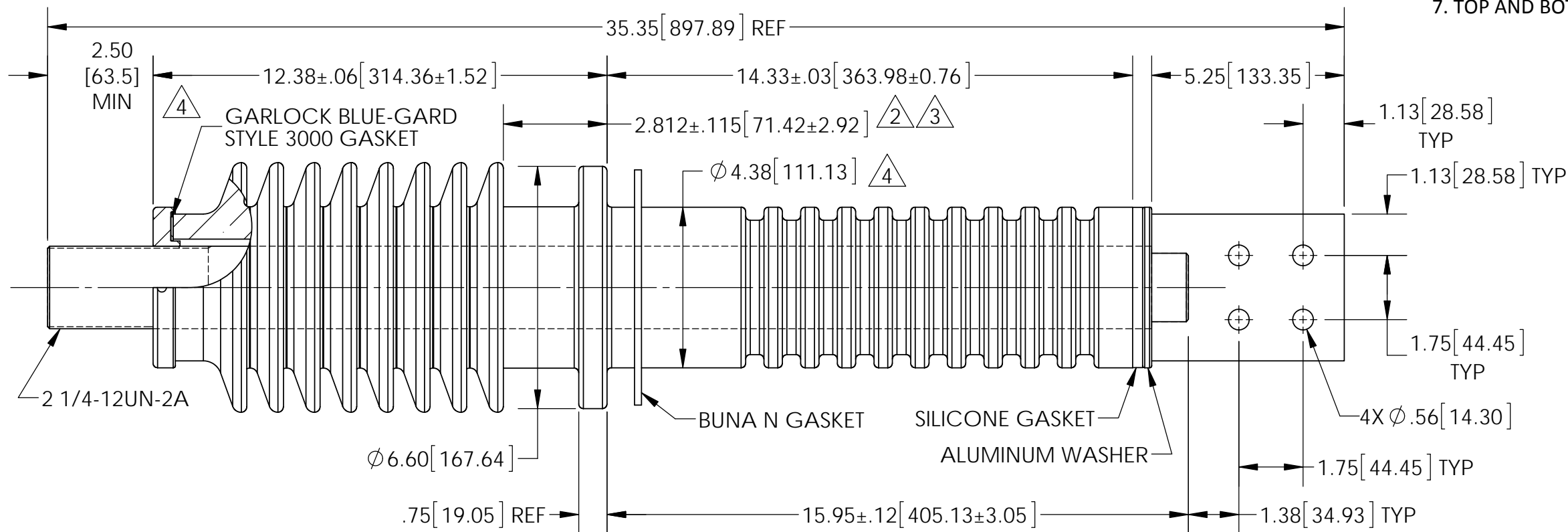
BUSHING TO ROOF GASKET

REQ'D: 1 PER ASSY
MAT'L: .19" \pm .020" THICK NITRILE BUNA N

REVISIONS					
REV.	DATE	ECN #	DESCRIPTION	BY	APP'D
1	3/26/07	HJ07-035	REM TENZALLOY	PWD	JM
2	10/29/13	HJ13-272	ADDED 2.06 DIM	BS	BLB
3	11/25/13	HJ13-296	CHG'D DIM, WAS 2.06-TO-2.812	BS	BLB
4	6/9/2015	HJ15-077	ADDED GASKET. ADDED ϕ 4.38 DIM. REFORMTED DWG	TJF	BLB

PORCELAIN NOTES:

1. WET PROCESS ELECTRICAL PORCELAIN.
2. GRAY GLAZE MUNSELL 5BG 7.0/0.4
3. TOLERANCE \pm 3% WITH NOTHING LESS THAN \pm .03, UNLESS OTHERWISE NOTED ON DRAWING.
4. BIL: 125KV
5. 60HZ WITHSTAND: 50KV DRY
45KV WET
6. CREEPAGE: > 25.20" TOP
> 18.30" BOTTOM
7. TOP AND BOTTOM TERMINALS ARE SILVER PLATED.



TOLERANCES (EXCEPT AS NOTED)

DECIMAL	+/- .032"/.8mm
FRACTIONAL	+/-
ANGULAR	+/- 2 Degrees

PROPRIETARY AND CONFIDENTIAL
THE INFORMATION CONTAINED IN THIS DRAWING IS THE SOLE PROPERTY OF H-J ENTERPRISES, INC. ANY REPRODUCTION IN PART OR AS A WHOLE WITHOUT THE WRITTEN PERMISSION OF H-J ENTERPRISES, INC. IS PROHIBITED.



H-J ENTERPRISES, INC.
3010 HIGH RIDGE BLVD. HIGH RIDGE, MO. 63049 USA
PHONE 1-636-677-3421 FAX 1-636-376-1915

15KV-125KV BIL 3000 AMP BUSHING ASSEMBLY 2 1/4"12 COPPER CONDUCTOR

MATERIAL (SEE DRAWING)

CHK'D - APP'D -
SCALE N.T.S.

DRAWING NO.
AS1543-001

DRAWN BY **CJT** DATE **10-12-06**